

SuperDry – the Formula One in Inkjet Photo Papers.

Now in four current grades.

News

**Welcome
to
FESPA 2005**

Page 4

Products

**Save money
with
"Spirit 130"**

Page 6

Products

**New
flame-retardant
polyester banner**

Page 11

Hello again,



Being better informed!

This is the motto of the relaunch of Sihl's newsletter. Use **Sprint** to find out quickly and easily all there is to know about digital imaging and put yourself in a better position to inform your own customers.

We pass on our knowledge and know-how to you. Alongside practical tips, we offer you valuable information about new technologies, current topics, descriptions and recommended applications for Sihl's new media.

We focus on your interests. Which subjects are of particular concern to you? What should we research further? Write to us and we will make sure these subjects are included in our editorial plan.

Are your customers also interested in **Sprint**?

No problem! If you wish us to pass on **Sprint** to your customers, let us know or order more copies.

We have invested a great deal of time and effort in the newsletter relaunch and are eager to know what you think of the result!

Drop us a line and tell us your opinion!

We hope you enjoy browsing through the following pages and reading the latest edition of **Sprint**!

Melanie Adam
Communication Manager

Sihl advertising media: with a new corporate design

We've made it at last...

... the new corporate design for Sihl Digital Imaging is ready!

Booklet



For ordering advertising media please contact:
melanie.adam@sihl.de

Folder Product Ranges



Folder all Product Ranges

Product Overview



Product



Samples



Sprint, formerly known as Scope...

Media booklet, folders for individual product lines, newsletter, leaflets and samples – everything will now be produced in the same style. Plenty of colour and interesting pictures give the whole appearance a distinctive quality and each sector can now be distinguished by its own colour:

- Inkjet Photo Media
- Inkjet Specialities
- Inkjet Artistic Specialities
- Inkjet Films
- Inkjet Paper GA and ARTEG
- Inkjet CAD / GIS
- Inkjet PrePress Media

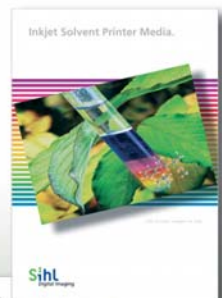
As part of the new corporate design, Sihl's newsletter has also been given a new look and name – **Sprint** – to tie in with the most important factor for success **TIME**.

Clearly arranged, with a modern layout and new structure with the categories "Communication", "Products", "Practical tips", "Internet", "Information" and "News", **Sprint** now offers more in the way of service. For example, at the end of each article, you will find an e-mail address to which you can send questions. We would also like to draw your attention to the section "Your opinion" – another new feature of **Sprint**. Whether you wish to make a comment, ask a question about certain articles or the Newsletter's new image, address certain issues, order more copies of **Sprint** or express praise or criticism – your opinion is appreciated!

For contact details, see page 12.

We have printed **Sprint** on a quality offset paper from Cartiere della Valtellina S.p.A., a member of the Diotec Group.

"Inkjet PrePress Media" will still be presented independently with its own folder and leaflet.



Alongside the booklet and online brochure, where the solvent products are divided into individual product ranges, there is now an overview of "Inkjet Solvent Printer Media" in the form of a 4-page leaflet and accompanying folder available.

Welcome to FESPA 2005

The countdown has started...

... and all eyes are currently directed towards Munich where FESPA, the biggest global event for screen printing, digital printing and industrial printing, takes place from 31st May to 4th June. FESPA expects to attract 30,000 visitors from all over the world. Over a five-day period, visitors can find out all about the latest trends and innovations from 400 international exhibitors.

The exhibition displays the latest developments in the fields of screen printing and large-format digital printing – from pre-press to production. To reflect the ever growing geographical penetration of the exhibition and the incorporation of the latest technologies, the motto of this year's event will be the

„Future of Global Imaging“.

At FESPA, Sihl presents the new colour separation film "Spirit 130" – a clear microporous SuperDry inkjet-coated PET film from the "PrePress" product range.

Please find detailed information on page 6.



A central theme at Sihl's trade fair stand is Inkjet Media for solvent based inks: the range includes photo paper, banner paper based on a polyester fabric, polypropylene and Tyvek, canvas, backlits, poster and multi-purpose papers. >>>

WWW. INTERNET

Online Catalogue:

A head start in know-how

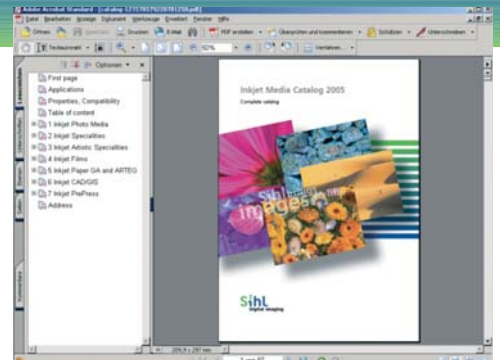
Sihl's internet presence is based on a data base which we update constantly for you. The latest amendment date or the date of your download is therefore indicated on all product pages and downloaded files.

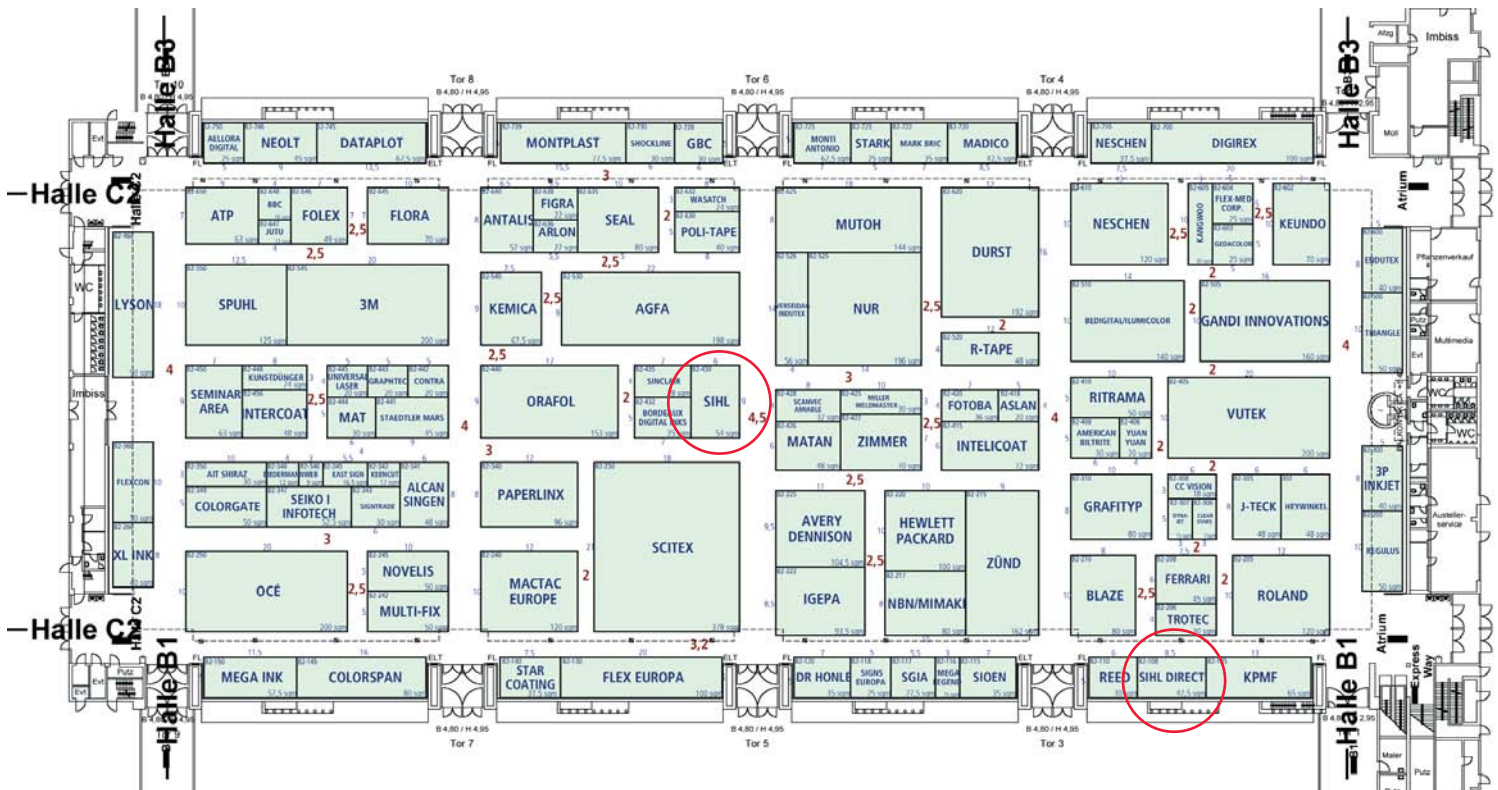
Take note of this information and make sure you update your downloaded data regularly. The online catalogue is based on a data base which now contains over 6,000 individual entries.

A special feature is the catalogue function which produces a pdf document that is tailored to your requirements. No matter whether selected by media, printer or ink our catalogue function offers you a variety of download possibilities.

A short description of what you have to do as a user is demonstrated in the brochure "Sihl internet – Secure your success with our data base".

For orders please contact:
melanie.adam@sihl.de





▶▶ These types of media are suitable for various indoor and outdoor applications and accommodate a wide range of high-standard user requirements in the advertising and promotion sector.

Visitors to FESPA are shown a number of possible applications and can see live how our printing professionals print and present numerous

inkjet media on wide-format solvent printers.



We see you at Hall B2 stand B2.430 and stand B2.180!



Relax after a hectic day at the fair – and get to know Munich!

Munich's beer garden season lasts as long as the weather permits – from spring until autumn.

Beer gardens in Munich's city centre

Park-Café
Sophienstr. 7
80333 München-Innenstadt

Opening times:
Mon. – Fri. 11:00 – approx. 1:00 hrs.
Sat., Sun. from 12:00 hrs.

Viktualienmarkt
Viktualienmarkt 6
80331 München-Innenstadt

Opening times:
Mon. – Fri. 9:00 – 22:00 hrs.
Sat. until 19:00 hrs.
Sundays closed

Bundesgartenschau 2005

Hundreds of thousands of plants and flowers – subtropical specimens and native varieties – can be admired in all their splendour from 28th April 2005, at the **Bundesgartenschau** in Munich.

- Number of trees planted: approx. 30,000
- Main tree types: pine, ash, lime, oak, maple
- Bulbs: approx 2 million
- Flowering shrubs: 60,000 on an area of 6,400 m²
- Shrubs: 200,000 on the banks of the lake

As Screen Printers – You save time and money with ‚Spirit 130‘

the new colour separation film

Sihl is happy to present its new colour separation film ‘Spirit 130’ – a clear microporous SuperDry inkjet-coated PET film from the “PrePress” product range.

This film is characterised by brilliant colour reproduction and high transmission OD > 3.0, for application as a reprographic film with black ink. ‘Spirit 130’ makes simple digital printing possible on transparent film in large and small printing formats.

The production of high-quality colour separations can be optimally controlled – no darkroom and no chemicals are needed. Because film production can take place internally, real net output increases which means, customer orders can be processed more quickly and with higher flexibility.

As a result, printers save time and money thanks to more effective production and quick processing times in the pre-process stage.

Further advantages of ‘Spirit 130’:

- simple digital printing on film
- just-in-time production of required films
- no darkroom and no chemicals are needed
- SuperDry technology (immediate drying)

Photographic properties:

- low D_{min}
- high UV optical density of up to 3.7 as a result of saturated colour areas
- very high resolution and spot focus



Physical properties:

- compatible with dye and pigmented inks
- outstanding dimensional stability owing to thermo-stabilised polyester film
- perfect flatness

Applications:

- substitute for reprographic films
- backlit
- other applications where the transparent character is of interest

Available in the following sizes:

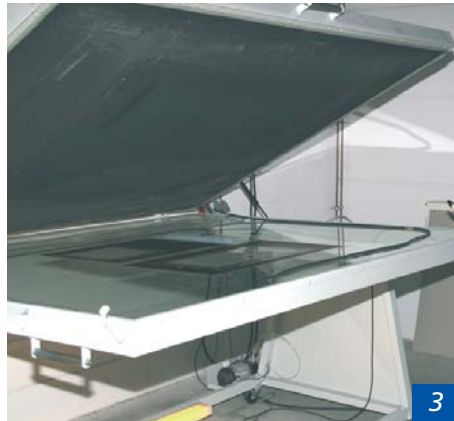
Sheets: A4, A3+
Finished rolls: 17", 24", 36", 42", 44", 50", 54", 60"



The new inkjet film 'Spirit 130' – Comparative Test

In a comparative test at the screen printer Brinkord in Düren, 'Spirit 130' was tested against an original process film, a masking film and a clear film for inkjet printing which is already firmly established in the market. The inkjet templates were printed on a Roland Hifi Jet with original black pigmented ink.

Then, the different templates were developed parallel onto a screen and, after rinsing examined with a magnifying glass. Thanks to the high resolution and excellent line and edge definition of 'Spirit 130', even small 8-point fonts were clearly visible on the 140T screen (= 140 threads per cm à 34 µm thickness). 'Spirit 130' is, therefore, ideal for the production of small labels and, certainly equals other films obtainable in the market!



Handling steps:

1 + 2

Digital print on "Spirit 130"

3

Place film on print-down frame with the printed side facing upwards.

The coated silk-screen frame is then placed onto surface.

4

The print-down frame is closed and a vacuum created, so that the film lies firmly on the screen. Exposure phase.

5

After exposure, the screen is removed and rinsed.

6

Printing may begin after drying.

If you have any questions, please contact our product management:

stefan.bruch@sihl.de

Lead article:

The SuperDry Technology

Only those who master the rules ...

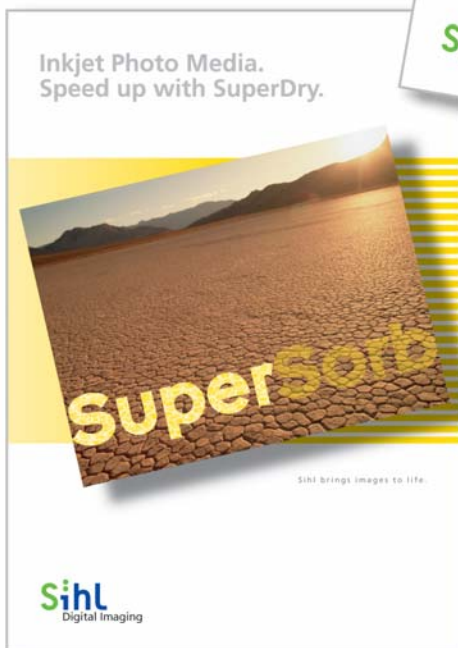
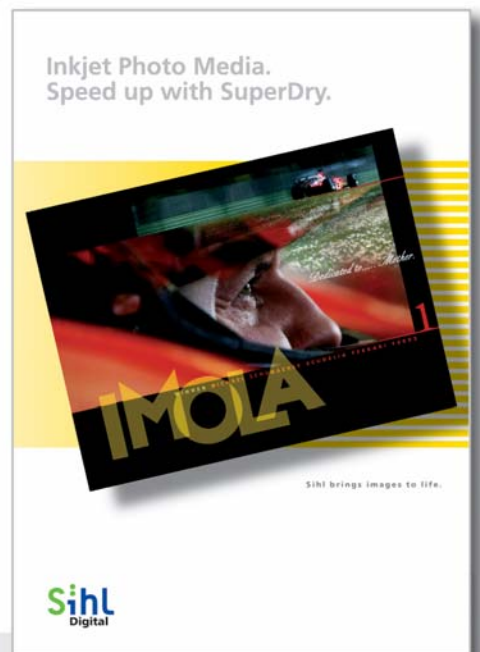
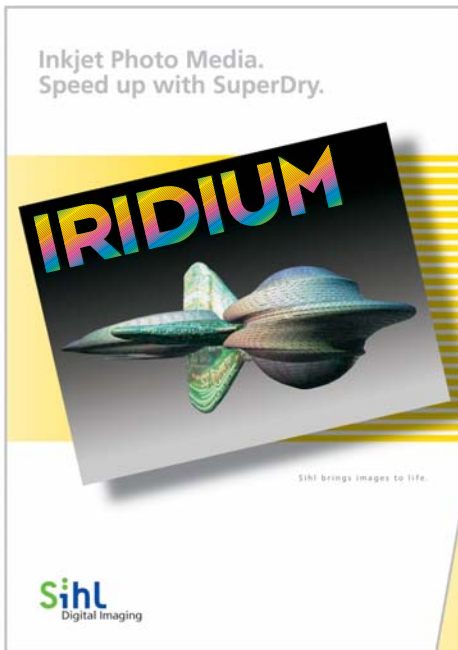
... can redefine them.

Such as Sihl's SuperDry Technology which combines photographic quality, extensive ink compatibility and maximum productivity.

High-quality photo realistic images are not just a question of vibrant colours, colour scope or stable colour saturation and fine colour gradients. They also have to be

quickly and reliably processable while guaranteeing universal ink compatibility. To turn all these aspects into an unbeatable advantage, Sihl's Development has produced and enhanced a completely new structure for functional coatings:

SuperDry



Product Overview SuperDry

IJ Iridium Photo Paper PE 280

- glossy 3695
- satin 3696

IJ SuperSorb Photo Paper PE 220

- glossy 3938
- satin 3944

IJ Maranello Photo Paper PE 195

- glossy 3999
- satin 3620

IJ Imola Photo Paper PE 170

- pearl 3698

Premium Photo Paper

- extended colour gamut
- photo feeling

High Quality Photo Paper

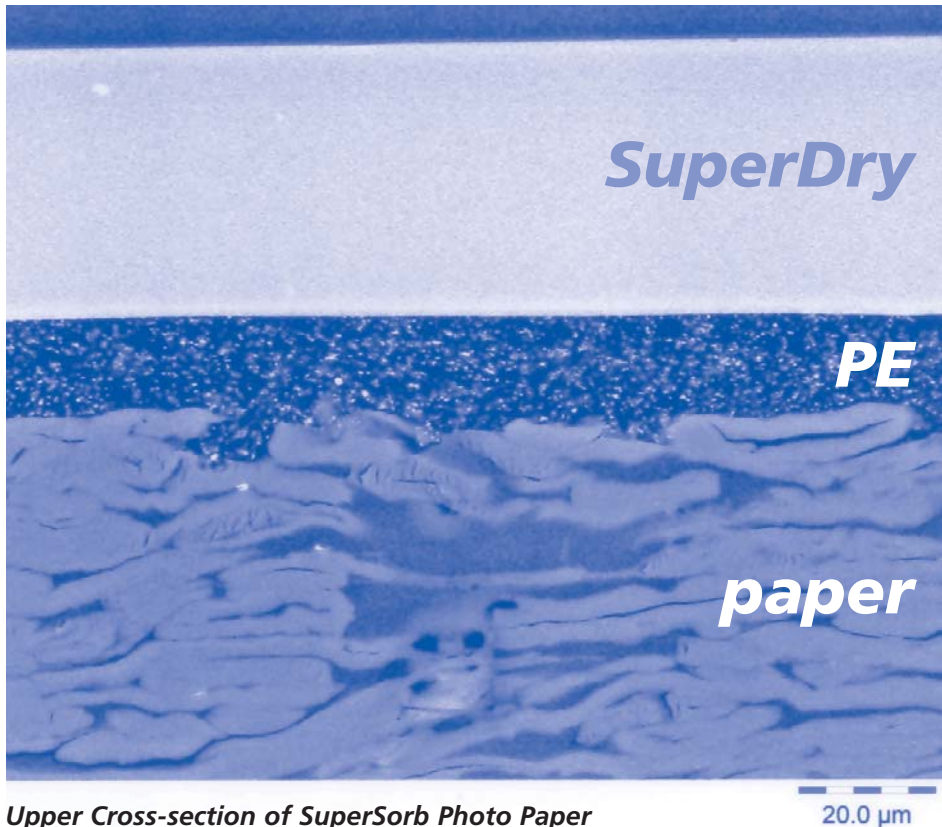
- very high ink limit
- wide colour gamut

Quality Photo Paper

- high ink limit
- ideal colour gamut

Economy Photo Paper

- bright white
- pearl surface finish



SuperDry

PE

paper

Upper Cross-section of SuperSorb Photo Paper

20.0 µm

Microscopically small particles are combined with our own specially developed binding agents to produce a perfectly uniform, highly absorbent matrix which achieves maximum gloss levels. In a fraction of second, the ink from the SuperDry inkjet layer is absorbed in a controlled way.

This fixes the medium – either pigments or soluble dyes – to surfaces and draws off water and other superfluous elements of the ink from the surface through specially developed microscopically small channels.

The media can therefore be quickly processed and it tolerates rougher treatment when processing has been carried out promptly.

Look out for ‚SuperDry‘ in our product data sheets!

That media has the following advantages:

- Instant drying
- Excellent laminating properties
- Universally compatible with soluble dye and pigment-based inks
- High gloss and brilliance
- Excellent water resistance
- Superior colour stability
- Effective scratch resistance

If you have any questions, please contact our product management:

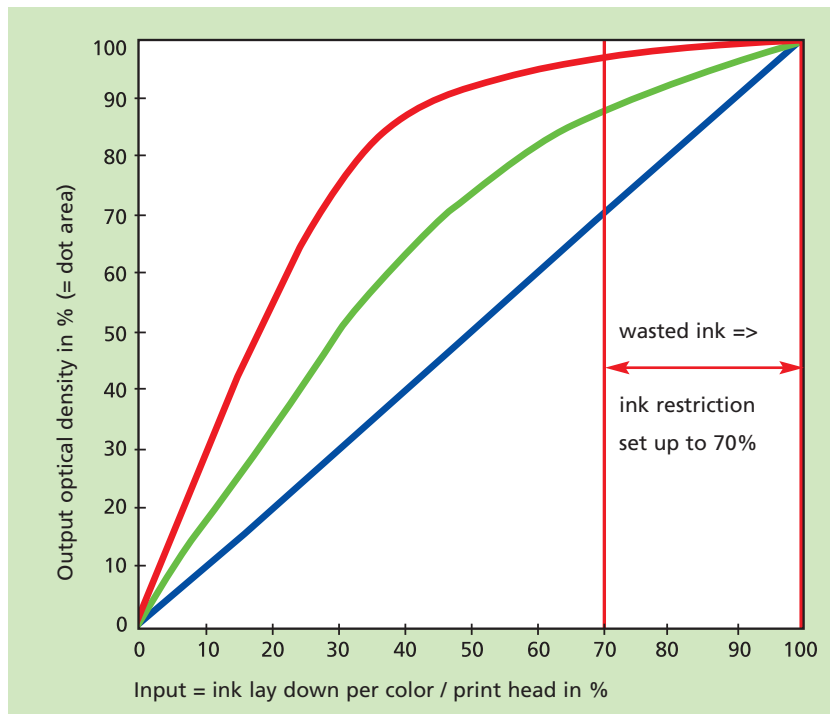
stefan.bruch@sihl.de



For inkjet media

Save ink without loss in quality

The ink absorption capacity of inkjet coatings is limited. Only swellable coatings can continue to absorb ink as a result of the way they function, although drying times become significantly longer.



- Standard setting printer w/o ink restriction
- with ink restrictions set up to 70%
- linear

In relation to the attainable colour gamut, Sihl SuperDry Media offer a good absorption capacity thanks to the targeted selection of appropriate components. Their quantity and absorption in the SuperDry image layer is selected in such a way that maximum colour saturation is guaranteed for all inks while the colour gamut remains varied.

To be able to take advantage of these optimal properties, it is important that the printer parameters can be tested using an ink limit target. In their original settings, many printers and print drivers, in particular, apply far more ink than is effective for the image. Often the absorption capacity of the coating is exceeded. A clear indication of this is the formation of stains in dark zones or residual ink on the surface.

This does not have to be the case. Sihl coatings make it possible to save ink.

To do so, the ink limit has to be adjusted in the printer programme in the following way:

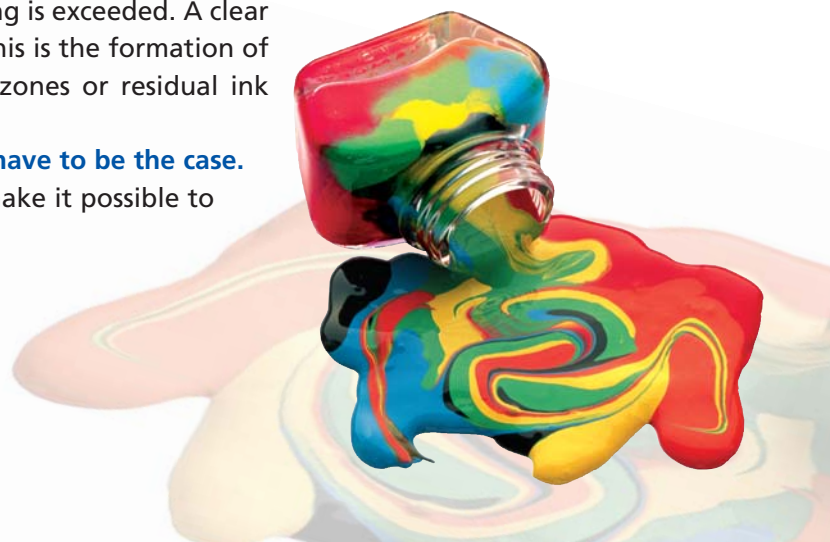
1 Print a linearisation target and select the full-tone surface cyan, magenta, yellow and black, with which maximum area fill is achieved. For example with the HP DJ 5500, 1200 x 600 dpi at 70 to 80% of the possible colour. This is referred to as ink restriction.

2 This value is set in the RIP, then the linearisation is printed and individual colour areas are measured in the RIP.

3 An ink limit target is then printed to determine the weakest point, i.e. the point at which blotchiness is clearly visible or ink residues stay on the surface and do not dry instantly.

If you have any questions, please contact our product management:

stefan.bruch@sihl.de



Polyester Banner

New: Flame-retardant

Based on our new economical polyester-fabric base, we introduce two new outstanding banner products! Depending on the printers and applications, customers can choose between the EXPO Banner Polyester WF 300 matt 3502 for aqueous dye- and pigmented inks or the PolySol PET Banner WF 290 satin 3501 for true- and eco-solvent printers!

The new base is the ideal combination of a fire-retardant, flexible and robust material with a homogeneous, smooth surface-structure. Therefore, the products are well suitable for versatile fine art indoor applications (exhibitions, banners, free-hanging applications) as well as for striking outdoor displays! Both top coatings enable high ink limits up to >300%, high image definition and, therefore an excellent color brilliance. The banners can be sewn, punched with grommets or stuck together with double-sided tapes (not suitable for welding).

Whether solvent- or aqueous-inks, with the new members of our banner-family we can offer the best combination of excellent tear-resistance with a decorative surface for your exhibitions, point of sale, advertising, promotion or banners ... the fire-certificates are included!

EXPO Banner Polyester WF 300 matt 3502
matt, thin polyester banner with a flexible and very tear-resistant base for aqueous inks

The product consists of a white, flame retardant polyester fabric (B1). The smooth surface is supplied with a waterfast inkjet coating for aqueous dye- and pigmented inks. The special coating is compatible with a variety of inkjet-printers with piezo or thermal heads and even with oilbased inks!

The new quality will be available by the beginning of June 05 in the following sizes:
 Finished Rolls: 36", 42" and 54" x 15m on 2" core

PolySol PET Banner WF 290 satin 3501
thin satin-finished polyester banner with a flexible and very tear resistant base for solvent inks

Polyester Banner for Solvent is a flame retardant (B1) and waterfast polyester banner for solvent- and eco-solvent inkjet printers.



It is the perfect match for versatile outdoor applications: Long lasting advertising with durable light stability, excellent water-fastness, high scratch-resistance and colour brilliance!

The new quality will be available by the end of June 05 in the following sizes:
 Finished Rolls: 30", 36" and 54" x 30m on 3" core

If you have any questions, please contact our product management:

mike.biedermann@sihl-bern.com

Impressum

Publisher: Sihl Digital Imaging

Editorial office: Melanie Adam
melanie.adam@sihl.de

Sihl GmbH
Kreuzauer Str. 33 · 52355 Düren · GERMANY
www.sihl.de

Layout: Mannhardt GmbH, Köln

Print: Pecks-Druck, Düren

printed on Valtellina VALPRINT
170 g offset paper,
Cartiere della Valtellina S.p.A.



Your opinion is...

...important for us!

Whether you wish to make a comment, ask a question about certain articles or the Newsletter's new image, address certain issues, order more copies of Sprint or express praise or criticism – your opinion is appreciated!

Drop us a line:

Sihl GmbH
Melanie Adam
Kreuzauer Str. 33
D-52355 Düren · Germany

Fax: +49 2421 597 307
Email: melanie.adam@sihl.de



Sihl USA combines...

...it's office and warehouse in a new location

Moving day occurred for Sihl's North American selling company on February 26, 2005. The warehouse function, together with offices for Marketing, Customer Service, and Controlling, relocated to 713-B Fenway Avenue, Chesapeake, Virginia.

Sihl occupies 42,000 feet (3,900 sq meters) in a 210,000 foot (20,000 sq meter) multi-tenant distribution center. The new facility features modern, high-bay, long-span construction techniques.

Phil Hursh, head of Sihl Inc.:

"At last we're one team under one roof. In this location we're within minutes of the Port, and adjacent to the terminals of our primary outbound carriers, saving both time and money. By becoming a single team, we are already seeing operating efficiencies. And, rent on the new

space is a little less than the sum of the rents on the two former locations."

An open house is being planned for late spring following completion of construction and landscaping of the grounds.

New address USA:

Sihl Inc.
Suite B
713 Fenway Avenue
Chesapeake
VA 23323, USA

Phone: +1 757 966 7180
Fax: +1 757 966 5107

www.sihlusa.com

New distribution center

